

CERTIFICATE OF LOCATION OF GOVERNMENT CORNER

County of Anoka

State of Minnesota

NW Corner of
NE $\frac{1}{4}$ of SE $\frac{1}{4}$

Corner of Sec. 3 Township 32 Range 23

I hereby certify that on the 20th day of July, 1966, I found the described corner which was evidenced by a concrete monument

and I further certify that to perpetuate the location of said corner, I did, at the exact location thereof, place a permanent marker consisting of a concrete monument (MON. UP 0.5' ±)

TOP PARTIALLY BROKEN/SPLIT

JS SH which reference or witness monuments are located in the manner following:

4-25-11

MONUMENT SOLID
IN PLACE SAWED
UNEVEN MON. FLAT
SAWED "X" IN TOP
WITH PUNCHMARK

(UP 0.5')
Nail and washer
Twin 14" Maple



NEW
PR. # 020861
(UP 1')

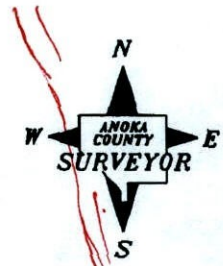
NEW (UP 1')
Nail and washer
18" Oak 12" BIRCH

NEW (UP 1')
Nail and washer
18" 16" Maple

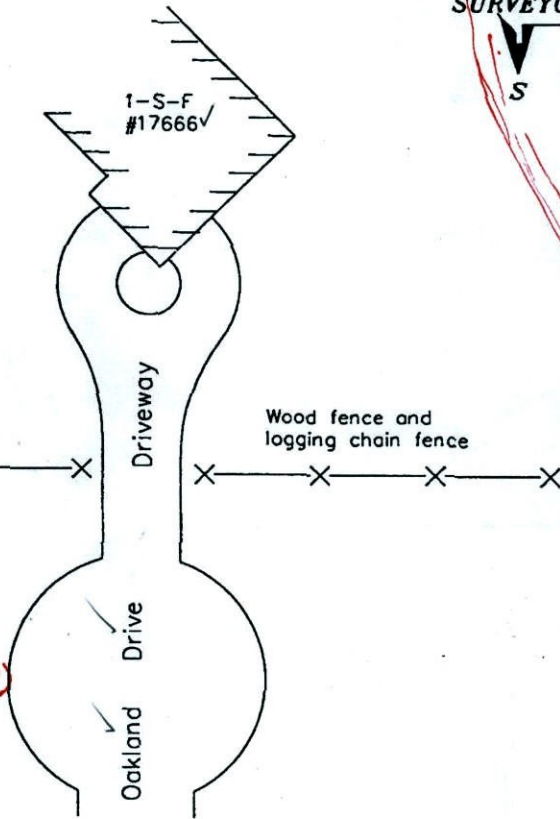


NEW
Nail and washer
6" Birch
22" POPLAR
(UP 2')

(UP 1')
Nail and washer
Transformer pole
84593



COON LAKE



BK-SS
TAPED

Revised date

5/24/71
6/05/75
6/06/78
6/08/81
10/18/91

4-6-11

N.A.D. 1983 Coordinates
(1996 adjustment)

County Project Coordinates	State Plane Coordinates
Northing <u>193231.0115</u>	Y _____
Easting <u>520037.6020</u>	X _____

Date _____

CERTIFICATE OF LOCATION OF GOVERNMENT CORNER

N.W. OF THE N.E. $\frac{1}{4}$ County of Anoka State of Minnesota

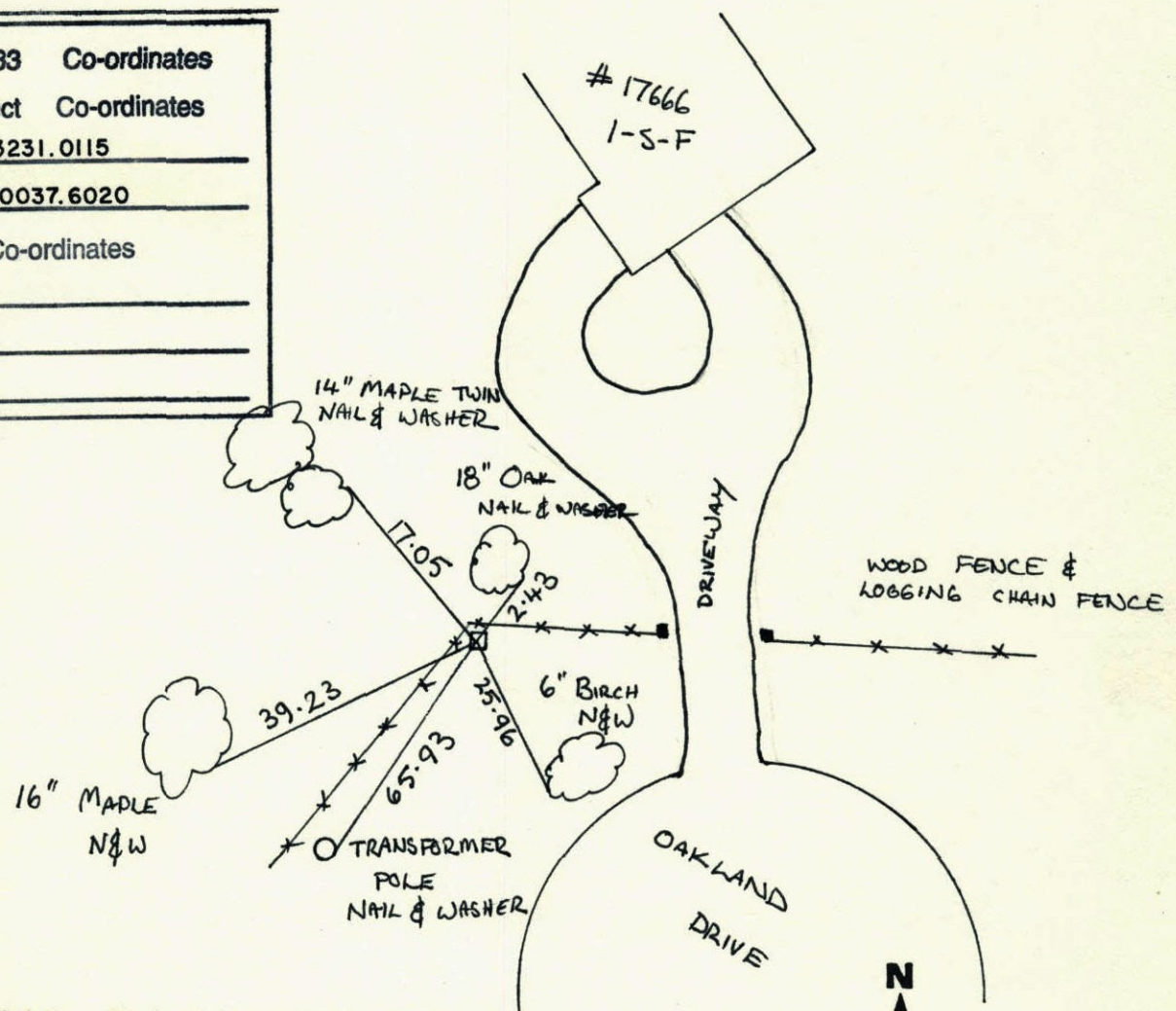
OF THE S.E. $\frac{1}{4}$ Corner of Sec. 3 Township 32 Range 23

I hereby certify that on the 20th day of JULY, 1966, I found the described corner which was evidenced by CONCRETE MONUMENT

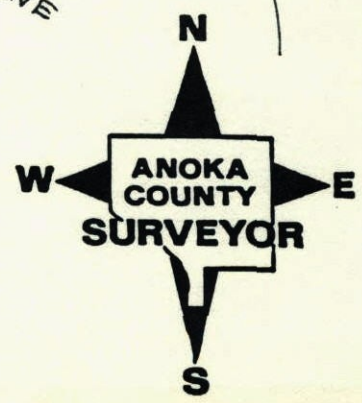
and I further certify that to perpetuate the location of said corner, I did, at the exact location thereof, place a permanent marker consisting of SAME

which reference or witness monuments are located in the manner following:

N.A.D.	1983	Co-ordinates
County Project		Co-ordinates
Northing	<u>193231.0115</u>	
Easting	<u>520037.6020</u>	
State Plane Co-ordinates		
Y	_____	
X	_____	
Date	_____	

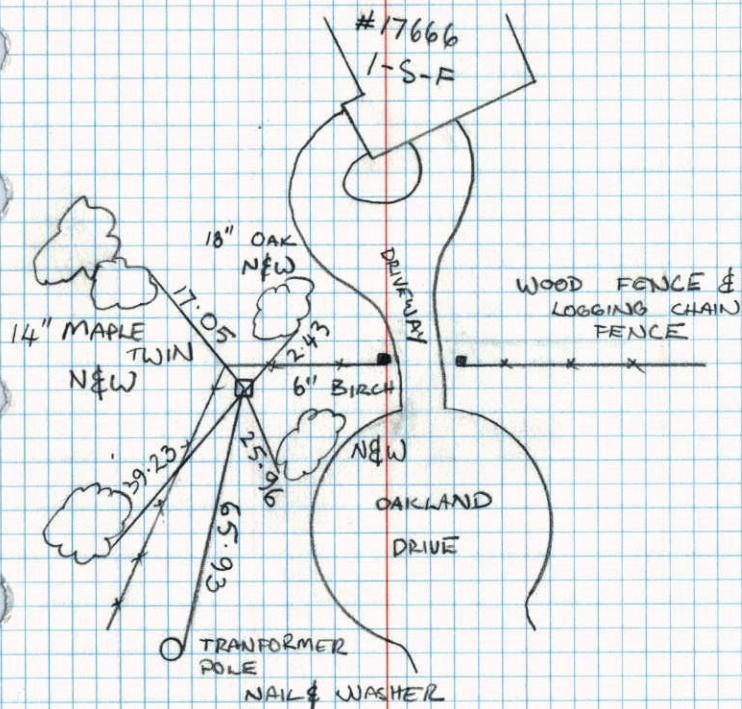


Revised date	Revised date	Revised date
<u>5-24-91</u>		
<u>6-5-75</u>		
<u>6-6-78</u>		
<u>6-8-81</u>		
<u>10-18-91</u>		



N.W. OF THE N.E. $\frac{1}{4}$ SEC 3, T 32, R 23
OF THE S.E. $\frac{1}{4}$

RETIE OF CONCRETE MONUMENT

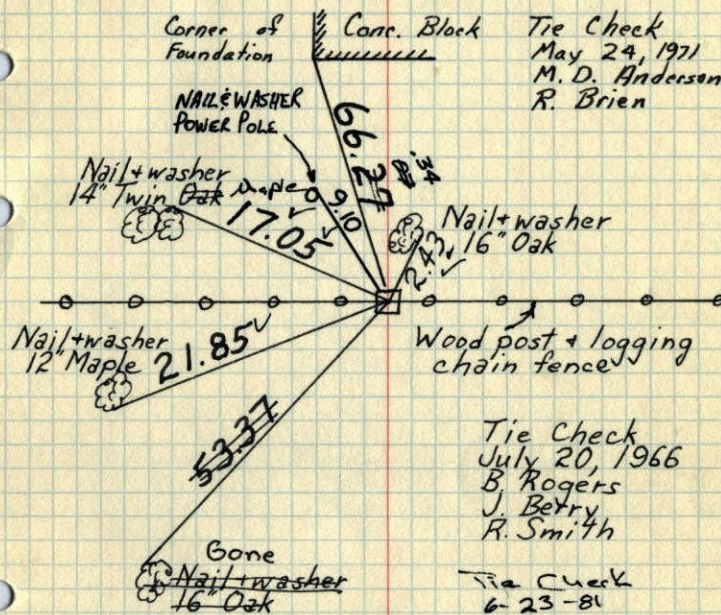


H. LARSON
B. KLEMZ
M. STEWART
10-18-91

N.W. Cor. of N.E. $\frac{1}{4}$ of S.E. $\frac{1}{4}$

Sec. 3-T32-R23

Concrete Monument up 1' on East-West
fence line



Tie Check
May 24, 1971
M. D. Anderson
R. Brien

Tie Check
July 20, 1966
B. Rogers
J. Betry
R. Smith

Tie Check
6-23-81
P. Ross
D. Horaby
G. Daffinger

Tie Check
June 5, 1975
D. Dahl
B. Sannerud
G. Adams

Tie Check
June 6, 1978
D. Dahl
J. Stephens
M. Kistrav

Tie Check
July 16, 1984
D. Ross
G. Lips
R. Bennett

TEMPERATURE CORRECTED
AND HORIZONTALLY
TAPED MEASUREMENTS

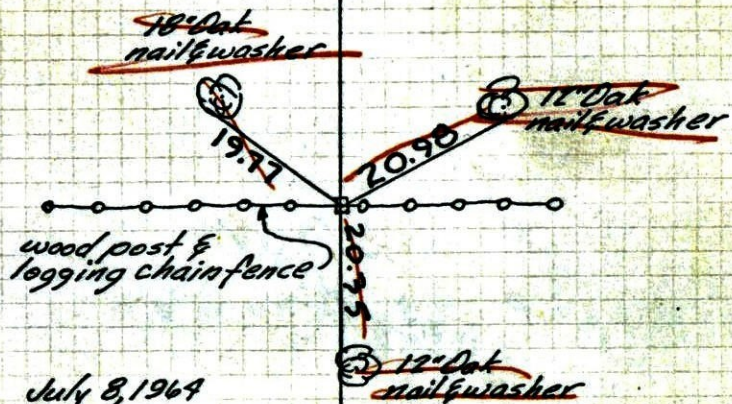
ROLAND W. ANDERSON
COUNTY SURVEYOR
ANOKA COUNTY, MINNESOTA

1/4th Cor.

12

N.W. Cor. of N.E 1/4 of S.E 1/4
Sec. 3-T32-R23

Conc. monument up 1'
on E-W fence line



July 8, 1964

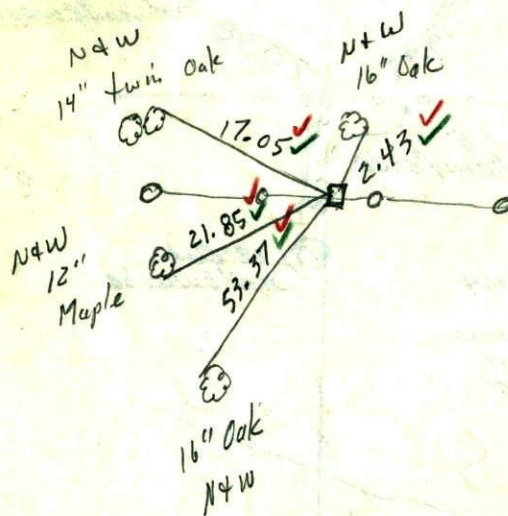
M.D. Anderson
R.M. Carlson
N. Livgard

See back
for new ties

TEMPERATURE CORRECTED
AND HORIZONTALLY
TAPED MEASUREMENTS

ROLAND W. ANDERSON
COUNTY SURVEYOR
ANOKA COUNTY, MINNESOTA

NW Corn. NE 1/4 of SE 1/4
Sec. 3, T32, R23



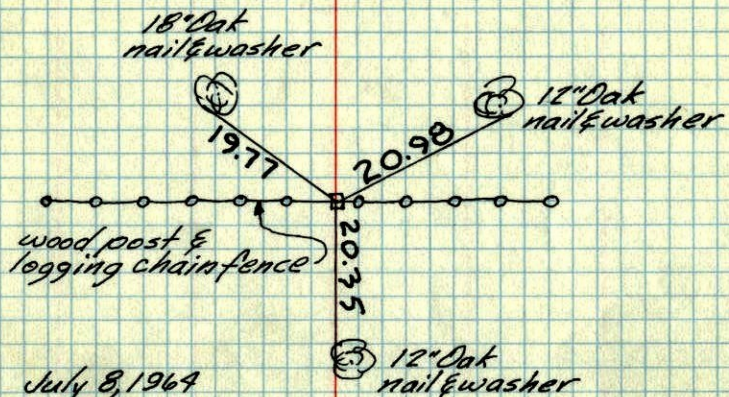
New ties
7/29/66

B. Rogers
A. Berry
Rick

748

N.W. Cor. of N.E¹/₄ of S.E¹/₄

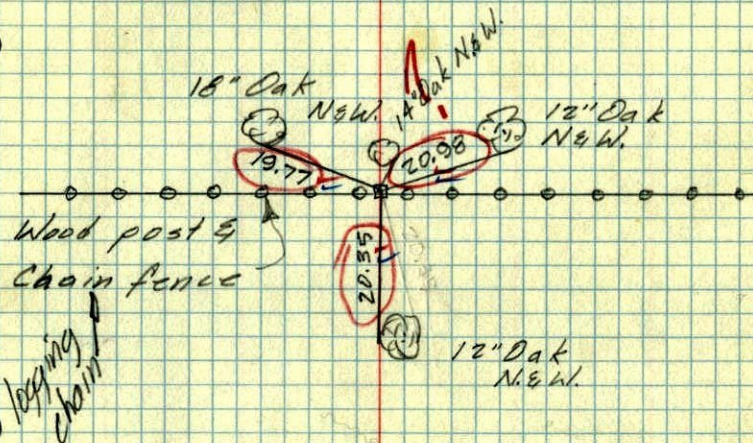
Sec. 3-732-R23

Conc. monument up 1'
on E-W fence line

July 8, 1964

M. D. Anderson
R. M. Carlson
N. LivgardTEMPERATURE CORRECTED
AND HORIZONTALLY
TAPED MEASUREMENTSROLAND W. ANDERSON
COUNTY SURVEYOR
ANOKA COUNTY, MINNESOTAN.W. Cor. of NE¹/₄ of S.E.¹/₄

Sec. 3-32-23

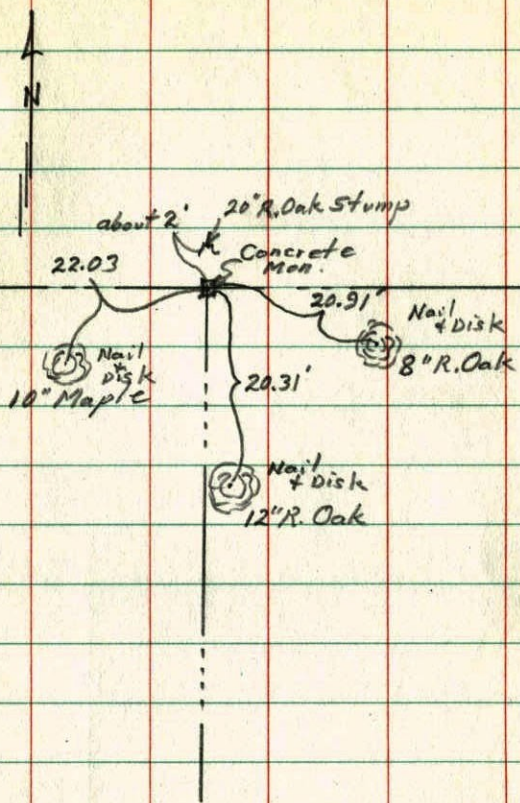
Conc. Mon. up 1'
on E&W fence line

July 8, 1964

M. D. Anderson
R. Carlson
N. LivgardTemp. 75°
Tape # 1

NW. Corner NE $\frac{1}{4}$, SE $\frac{1}{4}$

Sec. 3-32-23



May 29, 1960

Robert M. Knudson